



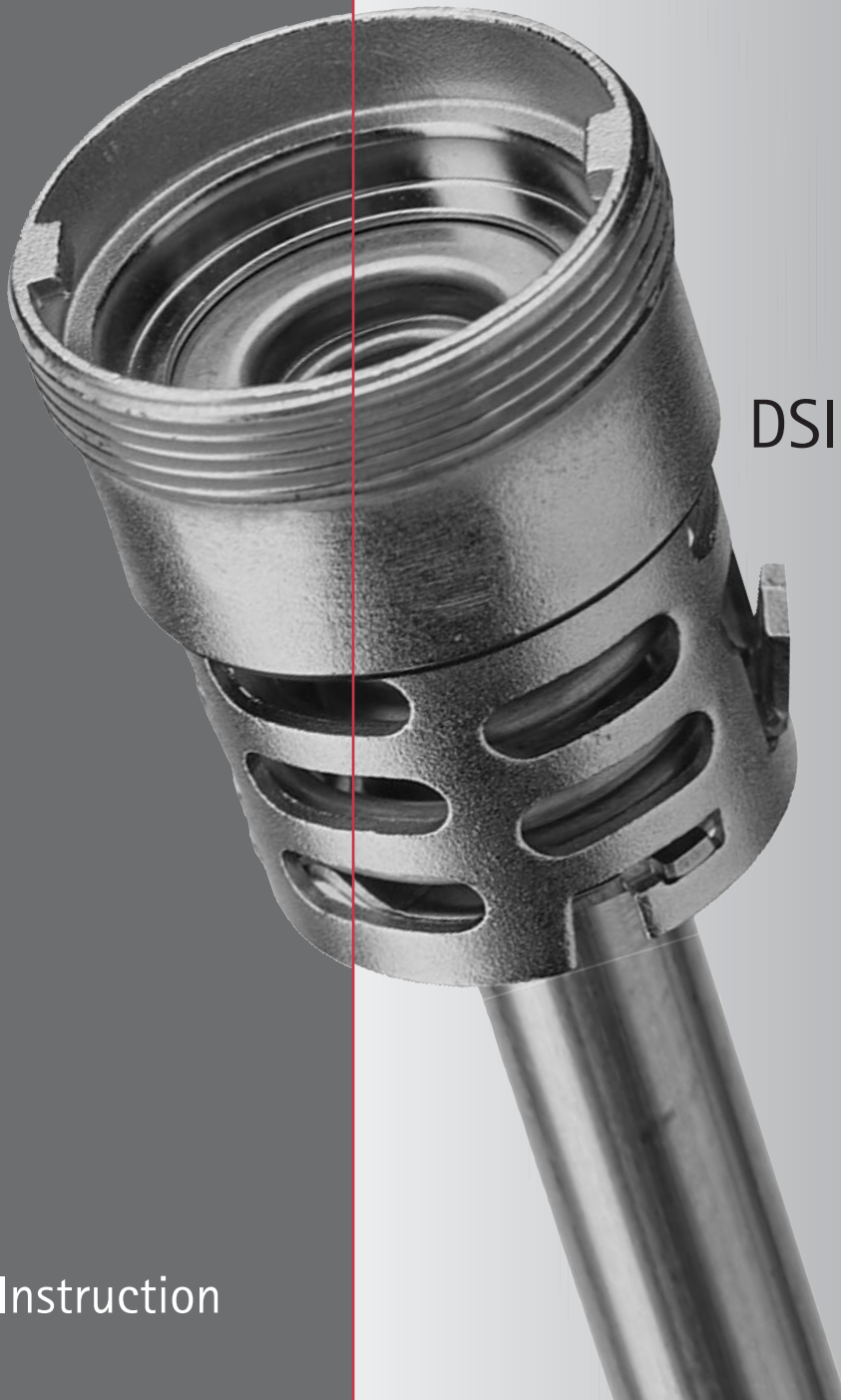
DISPENSE
SYSTEMS
INTERNATIONAL

MOUNTING – DISMOUNTING
ASSEMBLING – DISASSEMBLING
INSTRUCTION

for

DSI Extractor Tube

ET-W-SI



Instruction



Quality Management:

Michael Brüseke: (0049) (0)2385-772-512
e-mail: brueseke@dsi-group.net

Yilmaz Kodas: (0049) (0)2385-772-452
e-mail: kodas@dsi-group.net

Technical Department:

Christof Tuneke: (0049) (0)2385-772-430
e-mail: tuneke@dsi-group.net

Sales Department:

DSI Hamm

Sabine Groneberg: (0049) (0) 2385-772-212
e-mail: groneberg@dsi-group.net

Sandra Leszynsky: (0049) (0) 2385-772-214
e-mail: leszynsky@dsi-group.net

Renate Stosiek: (0049) (0) 2385-772-213
e-mail: stosiek@dsi-group.net

DSI GETRÄNKEARMATUREN GmbH
Gewerbepark Hamm-Rhynern
Oberster Kamp 20, 59069 Hamm-Rhynern, Germany
Tel: +49 (0) 23 85-77 21 00
Fax: +49 (0) 23 85-77 22 49
E-mail: info@dsi-group.net
internet: www.dispensegroup.com

DSI CZECH REPUBLIC
Závodni 50
CZ-36006 Karlovy Vary · Czech Republic
Tel: +4 20 (0) 35-3 44 90 25
Fax: +4 20 (0) 35-3 44 90 25
E-mail: dsi@volny.cz

DSI – U.K.

Unit 2
Ealand Industrial Estate
Ealand, Scunthorpe
North Lincoln Shire, DN17 4JW
United Kingdom
Tel: +44 (0) 17 24 71 23-77
Fax: +44 (0) 17 24 71 23-88
E-mail: dsiservicecenter@aol.com

Honoured partners,

You are welcome in the world of D.S.I. Dispense Systems International

More than 100 years of development and success leave behind us.

Companies as Fuge, Breitwisch, VHS or Germefa have given us a solid basis of know-how and experience on the sector of beverage technology in the past.

On this basis we have built up a new vision and have created something very Unique:

D.S.I. Unique Draught Technologies

We the D.S.I. team, resolutely focus our attention on new market orientated technologies which correspond to the requirements of our customers. We are thinking in the same way as you and especially we think in advance.

In the middle of Germany, located in Hamm/Westphalia we opened up a new chapter of our company history and set up a new manufacturing plant. This enables our 100 employees to utilise these optimal conditions for developing and manufacturing brand-new products. At the same time the certificate and review of ISO 9001 represents the principle for our high-grade quality management and obligation. Particularly one objective emphasises all our efforts.

The safety of your product with our greatest care and precision, equal whether you are filling, taping or you intend to dispense without problems. We aim to offer you 100% quality from production up to consumption.

We see ourselves as your partner in the field of beverage industries and offer you a constructive dialogue about solutions to the necessary tasks we are faced with every day. For this D.S.I. takes the responsibility with its well-known name. We are prepared to be challenged by you.

Please do it.

With kind regards



Harald Steinmetz
-General Manager-



DISPENSE
SYSTEMS
INTERNATIONAL

MOUNTING - DISMOUNTING
ASSEMBLING - DISASSEMBLING
INSTRUCTION
TECHNICAL INFORMATION

ET-W-SI

ET-W-SI





Today quality and safety determine the emphasis of all our activities. Security of your employees and colleagues plays an essential role in the daily application with our equipment as well as the easiest handling in installation and dismantling of our systems.

Specialised sealing systems made of high-grade materials are in daily utilisation with all our types of extractor tubes. Due to continuous improvement of our technology we are able to equip nearly all systems with a five year's guarantee.

1. Mounting instruction
2. Dismounting instruction
3. Disassembling instruction
4. Assembling instruction
5. Listing of required tools
6. Technical information
7. Dimensions

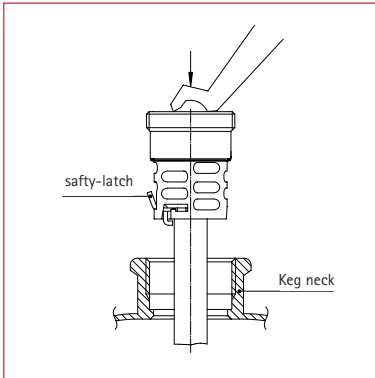
1. Mounting instruction

ET-W-SI

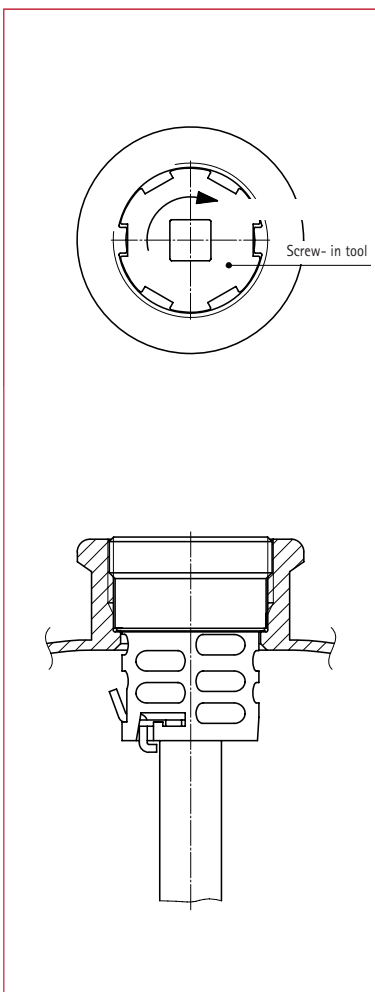


FITTING INSTRUCTION

EXTRACTOR TUBE WSI(D)/TNSI/WDSI



Check if the keg neck is clean.
Insert the Extractor Tube straight.
Push in the spear by hand. The safety
latch will recess and click back after
it has passed the keg neck.



Screw in the Extractor Tube
and tighten it, e.g. with the
DSI Screw-in Tool 025521.1 and
Torque-wrench 550424.6.
The mounting torque (continious)
must be 80 +/- 5Nm.

2. Dismounting instruction

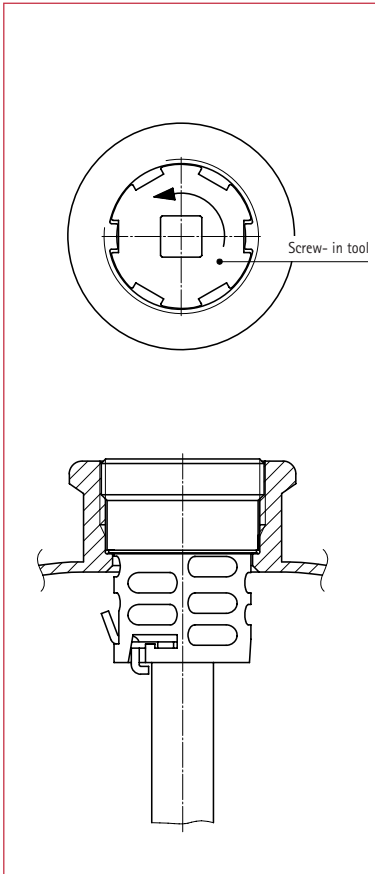
ET-W-SI



REMOVAL INSTRUCTION EXTRACTOR TUBE WSI(D)/TNSI/WDSI

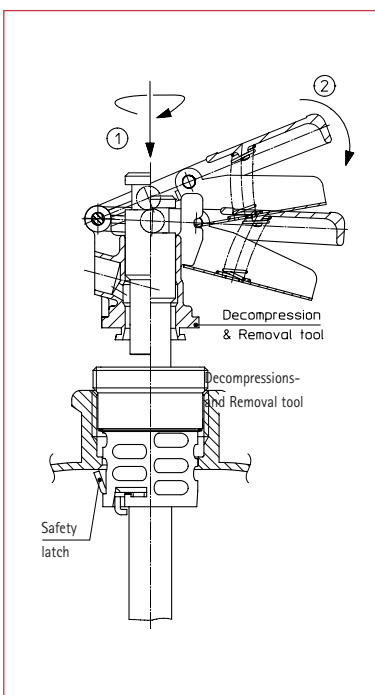


DISPENSE
SYSTEMS
INTERNATIONAL



Decompress the keg, e.g. by means of
the DSI Decompression and Removal
Tool

Unscrew the spear completely, e.g. with
the DSI Screw-out Tool 025521.1



Connect the Removal Tool 026578.2 like
a normal dispense head and press down
the handle till it clicks.
The safety latch will recess.

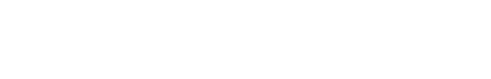
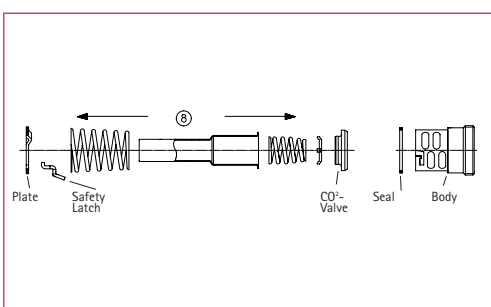
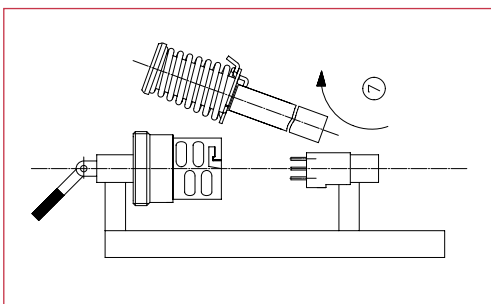
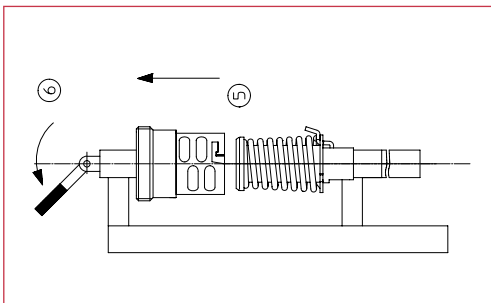
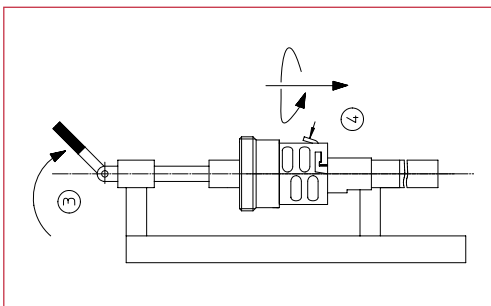
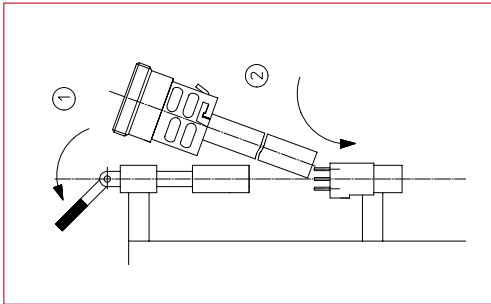
Take out the spear and disconnect
the Removal Tool.

3. Disassembling instruction

ET-W-SI



(DIS)ASSEMBLING INSTRUCTION EXTRACTOR TUBE WSI(D)/TNSI/WDSI



1. Push the handle of the Disassembling Tool backward.
2. Put the Extractor Tube in the Tool. Make sure that the three pins of the tool fit into the three holes in the bottom of the Extractor Tube Plate.
3. Pull the handle forward.
4. Push the safety latch slightly inwards. Pull the body downwards and turn it anticlockwise until it is unlocked.
5. Move the body upwards and connect it to the tool by turning the body 90°.
6. Push the handle backward.
7. Take the subassy out. Take the body off.
8. Disassemble all parts.

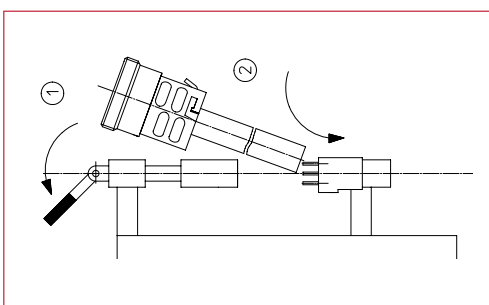
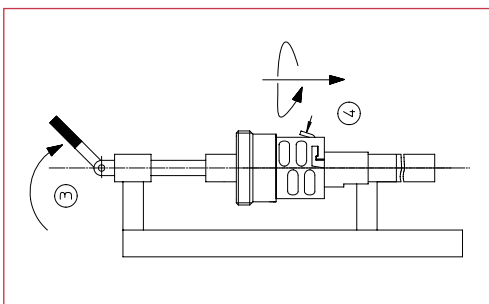
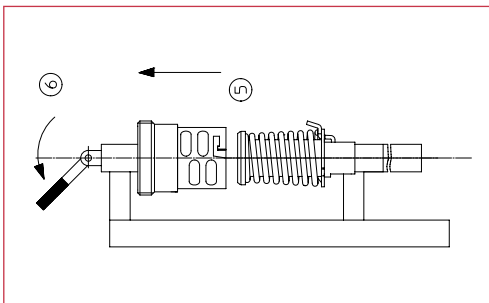
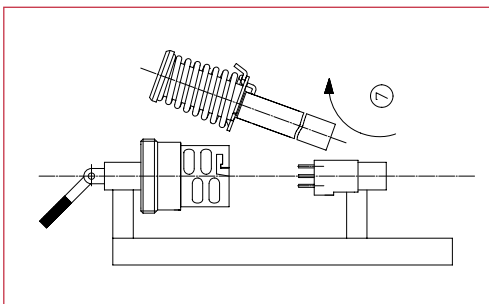
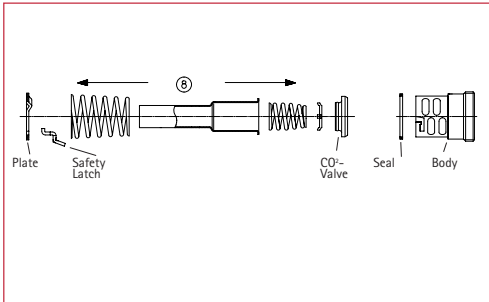
Attention please: when refurbishing an Extractor Tube, always replace the Body seal

4. Assembling instruction

ET-W-SI



ASSEMBLING EXTRACTOR TUBE WSI(D)/TNSI/WDSI



1. Assemble all parts (8)
2. Connect the body to the Assembling Tool. Put the subassy in the Tool. Make sure that the three pins of the Tool fit into the three holes in the bottom of the Extractor Tube Plate. (7)
3. Put the handle forward. (6)
4. Push the safety latch slightly inwards and move the body downwards.. (5)
5. Pull the body downwards and turn it clockwise until it is locked to the Extractor Tube Plate. Make sure that the safety latch sticks through the big opening in the body. (4)
6. Push the handle backward. (3)
7. Take the Extractor Tube out of the Assembling Tool. (2)

5. Listing of required tools

ET-W-SI



TOOLS, WELL TYPE EXTRACTOR TUBES WITH THREAD



DISPENSE
SYSTEMS
INTERNATIONAL



Release and decompression head
release and decompression head for:

026578.2	WS(I) - 2 lugs
026717.9	TNS(I) - 3 lugs
027516.5	WSL
027987.3	WDSI / WDISL



Screw-in/screw-out tool

025521.1



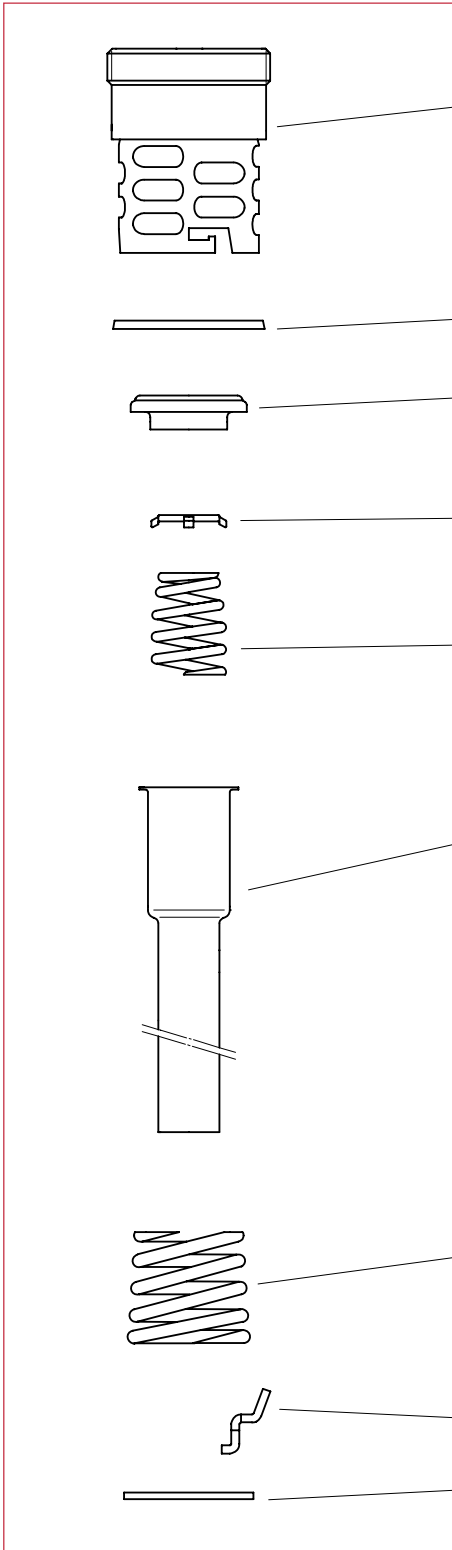
Assembling and Disassembling Tool for:

026664.0	WS(I) - 2 lugs
026790.5	TNS(I) - 3 lugs
028437.2	WDSI

6. Technical information

ET-W-SI





Body Stainless steel

Sealing ring Rubber

CO²-valve, Stainless steel + Rubber

Beer valve, Stainless steel

Spring, Beer valve, Stainless steel

Tube, Stainless steel

Spring, CO²-valve, Stainless steel

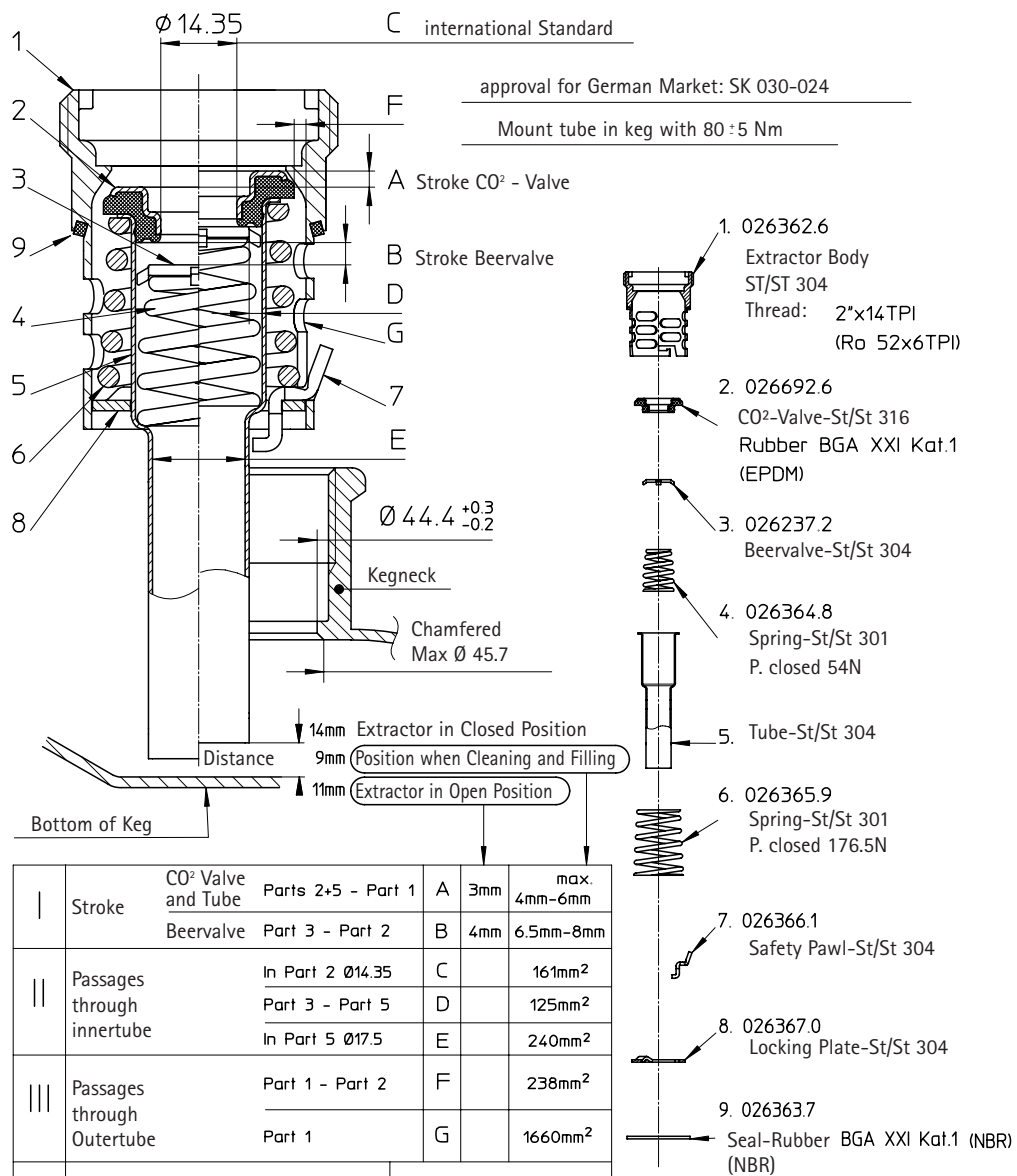
Latch and

Locking plate, Stainless steel

EXTRACTOR TUBE WSI(D)/TNSI



DISPENSE
SYSTEMS
INTERNATIONAL



7. Dimensions

ET-W-SI



WELL TYPE CONNECTION SYSTEM ET-W-SI



DISPENSE
SYSTEMS
INTERNATIONAL

